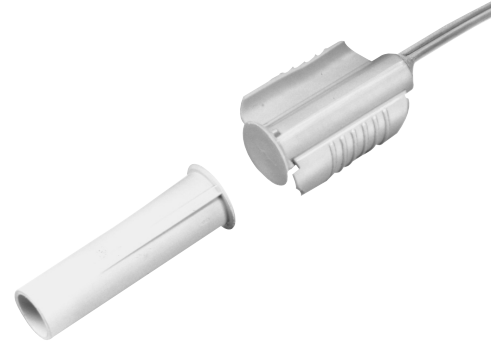


# 1275 series recessed magnetic contacts

recessed wing fit magnetic contacts with wire leads  
3/8 in. dia.

The 1275 series Wing Fit™ magnetic contacts are ideal for new construction applications, where wood swell poses a potential threat to the contact housing. The wings on the 1275 series flex to hold the contact securely in place as the wood expands and contracts.

The 1-inch contact fits most recessed applications. The 1275 housing is constructed of heavy duty plastic. A wide gap model offers added protection for loose-fitting doors and windows.



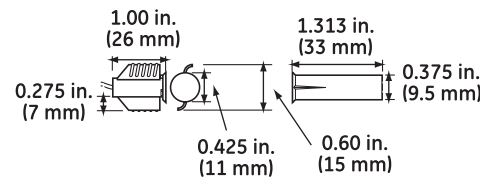
## Specifications

|                           |   |
|---------------------------|---|
| Voltage:                  | 1275/1275W: 100 VAC/VDC max.<br>1277: 30 VAC/VDC max. |
| Current:                  | 1275/1275W: 0.5 A max.<br>1277: 0.25 A max.           |
| Power:                    | 1275/1275W: 7.5 W max.<br>1277: 3.0 W max.            |
| Loop type:                | 1275/1275W: Closed<br>1277: Open or closed            |
| Electrical configuration: | 1275/1275W: Normally open<br>1277: SPDT               |
| Gap distance:             | 1275/1277: Up to 1/2 in.<br>1275W: Up to 1-1/4 in.    |
| Lead type:                | 1 ft. #22 wire  |
| Lead colors:              | 1277: Black-common; white-closed loop; red-open loop  |
| Dimensions:               | 1.313 in. L x 0.375 in. dia. (33 x 9.5 mm)            |
| Housing:                  | Flame retardant ABS plastic                           |
| Color:                    | White   |
| Regulatory:               | UL  |

- Conforms to angled, misaligned, or irregular holes
- Wings protect contact reed from being crushed by swelling wood
- Shorter switch body for easy pre-wiring
- Available wider gap distance helps prevent false alarms caused by loose-fitting doors and windows

## Ordering information

|              |   |
|--------------|---|
| 1275N-10PKG  | Recessed wing fit magnetic contact with wire leads, 3/8 in. dia., 1/2 in. gap size, closed loop, white, pk/10             |
| 1275WN-10PKG | Recessed wing fit magnetic contact with wire leads, 3/8 in. dia., wide gap, 1-1/4 in. gap size, closed loop, white, pk/10 |
| 1277N-10PKG  | Recessed wing fit magnetic contact with wire leads, 3/8 in. dia., 1/2 in. gap size, SPDT, white, pk/10                    |
| 1924N-10PKG  | Magnet for 1275 series, white, pk/10  |



Note: Wings compress to 0.375 in. (9.5 mm) dia.