

# TruVision<sup>®</sup> Navigator

## Video Management System

### OVERVIEW

TruVision Navigator by Interlogix represents our latest advancement in integrated security solution software. The system delivers powerful software capabilities and allows users to manage their TruVision video, TruPortal™ access control and IFS® network switches with a centralized, intuitive user-interface. TruVision Navigator can be used as a standalone application or can be deployed as a client/server architecture, making it scalable for deployment in either small- or large-scale commercial environments.

Using the intuitive TruVision Navigator user interface, administrators can remotely configure the complete line of TruVision IP cameras, DVRs, HD-hybrid recorders and NVRs. TruVision Navigator also provides direct live/playback video viewing from TruVision IP cameras with SD memory cards. Key features include video tabs, custom views, maps, live event monitoring, camera sequencing, 360° camera de-warping, logical event filter, TruPortal integration, browser support and network diagnostic tool.\*

TruVision Navigator also offers backwards compatibility support for select legacy TruVision recorders to aid in system upgrades. The software is able to provide efficient network bandwidth management and is ideal for LAN or WAN applications that incorporate multiple sites, such as schools, retail stores, bank branches, entertainment venues and geographically dispersed organizations.



### STANDARD FEATURES

#### Intuitive Operator User Interface

- Logical view to customize the video device tree
- Up to 10 video tabs for efficient video display management
- Custom views that allow user-specified groups of video streams and sequencing
- Map display of camera locations with interactive camera control, and door locations with TruPortal door control integration
- Live video displayed on event monitor when triggered by alarm event
- Add video bookmarks and manage with bookmark manager
- TruVision Player which plays back exported video with a max 16-up display with print and snapshot capability, synchronous playback, timeline search and full-screen mode
- Directly view live/playback video from TruVision IP cameras (with SD cards)
- Built-in TruVision 360° camera de-warping
- Optional USB keypad/joystick

#### Easy System Installation and Maintenance

- Remote focus/zoom control functions
- Discover TruVision cameras, IFS switches and TruPortal access on the network
- Built-in Device Manager provides easy way to activate, set-up and maintain TruVision devices on a network
- Remote device configuration and client software distribution

#### System Administration Management

- Standalone and client/server architecture that supports server offline mode
- Defined groups and user permissions
- Automatic health diagnostic service to maintain system uptime
- Audit trails and report exporting
- Built-in device diagnostics and reporting
- Task scheduling and main video stream control that helps reduce bandwidth needs during peak network traffic periods
- The ability to automatically pause video streams that are not being viewed

\*Some features may require the purchase of a license.

## Operator-Friendly User Interface

TruVision® Navigator brings together video monitoring, TruPortal™ access control and IFS® network switches into one complete interface.

### TruVision Navigator

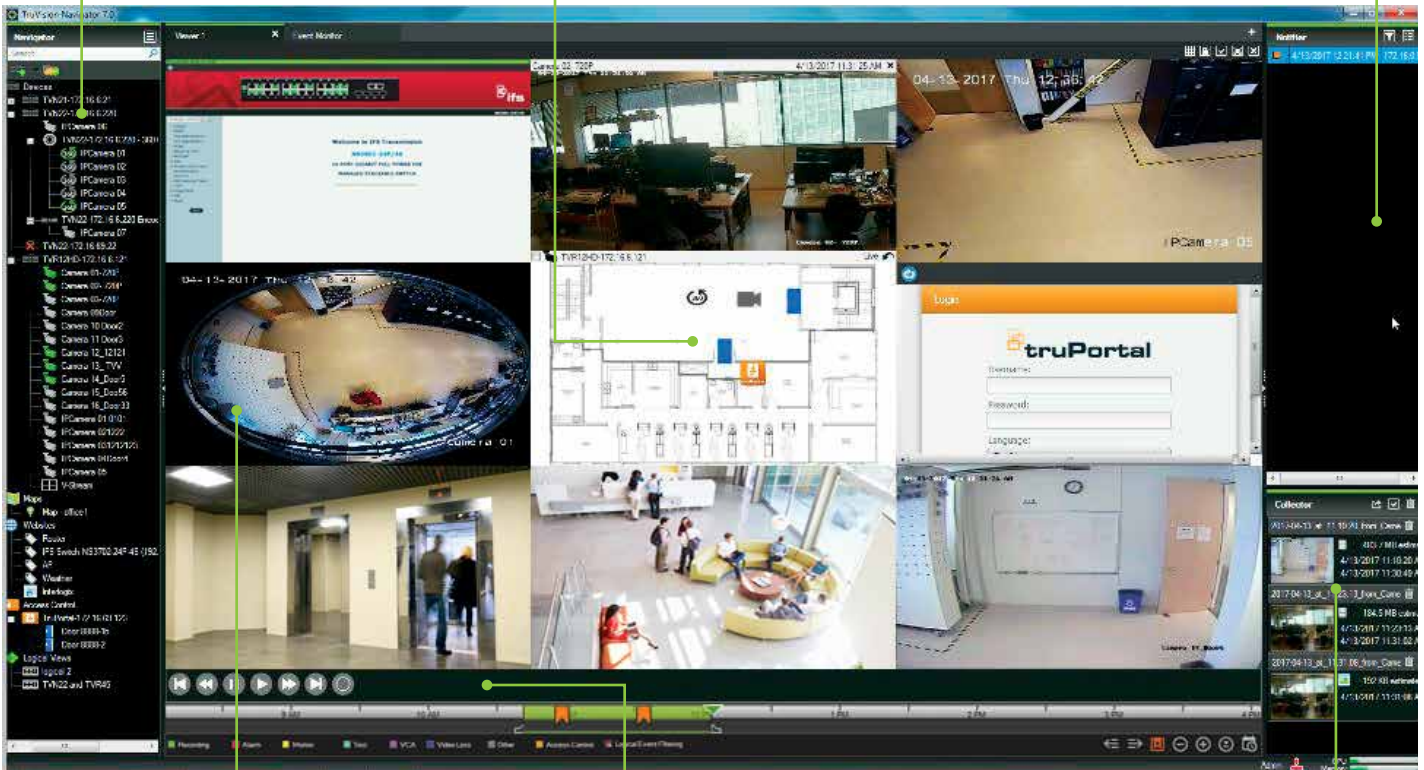
Provides quick access to TruVision video cameras and recorders, TruPortal access control panels and doors as well as IFS network switches.

### Facility/Campus Maps

Import facility/campus maps and easily add TruVision cameras or TruPortal panels and doors. Link cameras to doors to automatically receive event monitor video verification.

### Notifier

Provides real-time, color-coded video event notification and TruPortal alarm events.



### Viewer

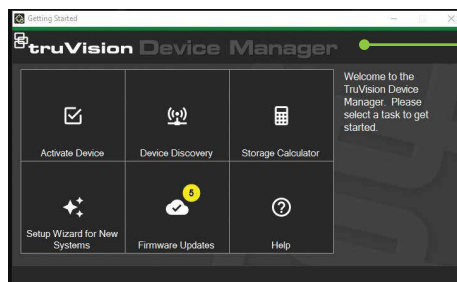
View live and recorded video selected from the device, Notifier or Collector with up to 10 detachable video viewing tabs. The event monitor window provides color coded indications and live video during an alarm. Users can easily setup individual video viewing tiles for sequencing of multiple cameras for easy monitoring.

### Video Playback Controls

Easily play, pause, rewind, scrub and bookmark video recordings with controls and timeline.

### Collector

Acts as a holding repository for video segments, snapshots and local recordings ready for export.



### Built-in Device Manager

Easy wizard based tool to easily activate and set-up your system. Perform global password changes and automatically notifies you of firmware updates on all your networked TruVision devices.

## Device Feature Matrix

Feature	TruVision® Camera Series	DVR 15HD Series	DVR 45HD Series	NVR 10 Series	NVR 22 Series	NVR 70 Series
<b>Supported Device(s)</b>	TVA, TVB, TVC, TVD, TVE, TVF, TVQ, TVW, UVP Series	Yes	Yes	Yes	Yes	Yes
<b>Network Discovery</b>	Cameras, Recorders, TruPortal™, IFS® switches					
<b>Compression</b>	H.264/H.265	H.264/H.265	H.264/H.265	H.264/H.265	H.264/H.265	H.264/H.265
<b>Connection Types</b>	TCP, UDP	TCP, UDP	TCP, UDP	TCP, UDP	TCP, UDP	TCP, UDP
<b>Streaming Limits</b>	Dependent on the camera capability	75 Live or Playback streams	75 Live or Playback streams	75 Live or Playback streams including those used by the web page	75 Live or Playback streams including those used by the web page	75 Live or Playback streams
<b>Stream Overlay</b>	VCA Rules, Motion Rules, Camera Name, Date and Time	VCA Rules, Motion Rules, POS Text, Camera Name, Date and Time	VCA Rules, Motion Rules, POS Text, Camera Name, Date and Time	Camera Name, Date and Time	Camera Name, Date and Time	VCA Rules, Motion Rules, POS Text, Camera Name, Date and Time
<b>Dual Streaming</b>	Yes	Yes	Yes	Yes	Yes	Yes
<b>Playback Controls</b>	Play, Pause, Frame Advance, Fast Forward (1x, 2x, 4x, 8x), Slow Motion (1.0x, 0.5x, 0.25x, 0.125x, 0.0625x)	Play, Pause, Frame Advance, Fast Forward (1x, 2x, 4x, 8x), Slow Motion (1.0x, 0.5x, 0.25x, 0.125x, 0.0625x). Note: Frame Reverse and Rewind Speeds are directly dependent upon the actual device capability.	Play, Pause, Frame Advance, Fast Forward (1x, 2x, 4x, 8x), Slow Motion (1.0x, 0.5x, 0.25x, 0.125x, 0.0625x). Note: Frame Reverse and Rewind Speeds are not supported.	Play, Pause, Frame Advance, Fast Forward (1x, 2x, 4x, 8x), Slow Motion (1.0x, 0.5x, 0.25x, 0.125x, 0.0625x). Note: Frame Reverse and Rewind Speeds are not supported.	Play, Pause, Frame Advance, Fast Forward (1x, 2x, 4x, 8x), Slow Motion (1.0x, 0.5x, 0.25x, 0.125x, 0.0625x), Rewind (1x, 2x, 4x)	Play, Pause, Frame Advance, Fast Forward (1x, 2x, 4x, 8x), Slow Motion (1.0x, 0.5x, 0.25x, 0.125x, 0.0625x). Note: Frame Reverse and Rewind Speeds are directly dependent upon the actual device capability.
<b>Digital Zoom</b>	Live & Playback (for models that support SD Cards)	Live and Playback	Live and Playback	Live and Playback	Live and Playback	Live and Playback
<b>Snapshot</b>	Yes	Yes	Yes	Yes	Yes	Yes
<b>Local Record</b>	Yes	Yes	Yes	Yes	Yes	Yes
<b>Instant Replay</b>	Yes (for models that support SD Cards)	Yes	Yes	Yes	Yes	Yes
<b>Disk Analysis</b>	No	Alarm, Motion, Recorded, VCA, Text Note: Video Loss is only supported for analog channels. Video Loss is not supported in disk analysis.	Alarm, Motion, Recorded, VCA, Text Note: Video Loss is only supported for analog channels. Video Loss is not supported in disk analysis.	Alarm, Motion, Recorded, Untagged Note: Video Loss is not supported in disk analysis.	Alarm, Motion, Recorded, VCA (for firmware that supports VCA). Note: Video Loss is not supported in disk analysis.	Alarm, Motion, Recorded, VCA, Text. Note: Video Loss is not supported in disk analysis.
<b>Time Line Disk Analysis</b>	Yes	Yes	Yes	Yes	Yes	Yes
<b>Video Export</b>	Yes (for models that support SD Cards)	Yes	Yes	Yes	Yes	Yes
<b>TruVision Navigator Player</b>	Yes	Yes	Yes	Yes	Yes	Yes
<b>PTZ and 360° Camera Control</b>	Yes (for TVF, TVP and UTP models)	Yes	Yes	Yes	Yes	Yes
<b>Focus, Iris, Zoom</b>	Yes (for TVP, UTP models)	Yes	Yes	Yes. Note: PTZ protocol GE RS-485 does not support Focus and Iris commands in this release		Yes
<b>Presets</b>	Yes (for TVP, UTP models)	Yes	Yes	Yes	Yes	Yes
<b>Tours</b>	Yes (for TVP, UTP models)	Yes (dependent on camera and device)		Go To, Record. Note: only 1 tour is supported on Tour 1 for a PTZ camera.		Yes (dependent on camera and device)
<b>Camera Search</b>	Alarm, Event, Motion, VCA	Alarm, Event, Motion, Text, VCA		Alarm, Event, Motion		Alarm, Event, Motion, Text, VCA
<b>Smart Search</b>	No	Yes	Yes	No	Yes	Yes
<b>Point-of-Sale Text</b>	No	Yes	Yes	No	Yes	Yes
<b>Motion</b>	Yes	Yes	Yes	Yes - set active zones per individual camera via the Motion Configuration option within Navigator		Yes
<b>Audio</b>	Yes	Yes	Yes	Yes (1 audio input per device)	Yes (16 audio inputs per device; 1 per channel)	Yes
<b>Bi-directional Audio</b>	Yes	Yes	Yes	Yes	Yes	Yes
<b>Notifications</b>	Yes	Alarm, Video Loss, Motion, VCA, Disk Full, Disk Failure. Note: Email notification is not supported at the device level.	Alarm, Video Loss, Motion, VCA, Disk Full, Disk Failure. Note: Email notification is not supported at the device level.	Alarm, Video Loss, Motion, Disk Full, Disk Failure	Alarm, Video Loss, Motion, Disk Full, Disk Failure	Alarm, Motion, VCA, Disk Full, Disk Failure. Note: Email notification is not supported at the device level.
<b>Health Diagnostics</b>	Yes	IP Address, MAC Address, Model Name, Serial Number, Firmware Version, Device Date/Time, Total Device Health, HDD Status, HDD Capacity, Cameras in Video Loss, Cameras in Alarm, Current Client Connections, Record Status				
<b>Firmware Upload</b>	Yes	Yes	Yes	Yes	Yes	Yes
<b>Bulk Firmware Upload</b>	Yes	Yes	Yes	Yes	Yes	Yes
<b>Device Configuration</b>	Yes	Yes	Yes	Yes	Yes	Yes
<b>Remote Reboot</b>	Yes	Yes	Yes	Yes	Yes	Yes
<b>IP Camera Support</b>	N/A	Yes	Yes	See camera compatibility list	See camera compatibility list	Yes
<b>Device Log Support</b>	Yes	Yes	Yes	Yes	Yes	Yes
<b>Trigger Outputs</b>	Yes	Yes	Yes	Yes	Yes	Yes

Note: Features listed depend on device type and firmware version used. Please download the latest firmware release for the device in use to get benefits of latest features.

# TruVision® Navigator

## Video Management System

### Software requirements

The following operating systems and other software components are prerequisites for client and server installation:

#### Client Software Requirements

Component	Version	Notes
Operating System	Microsoft® Windows XP Pro SP3	
	Microsoft Windows Vista® SP1 32-bit/64-bit	
	Microsoft Windows 7 SP1 32-bit/64-bit	
	Microsoft Windows 8.1 32-bit/64-bit	WinPCAP needs to be installed separately and run in compatibility mode for operation on Windows 8 systems
	Microsoft Windows 10 64-bit	
	Microsoft Windows Server® 2003 R2 32-bit	
	Microsoft Windows Server 2008 R2 32-bit/64-bit	
	Microsoft Windows Server 2012 R2 64-bit	
Other	Microsoft .NET Framework 4.0	Packaged with the installation

### Server hardware guidelines

The following specifications are only meant to serve as a guideline as TruVision Navigator system performance varies according to the robustness of the machine.

#### Server hardware specifications

Component	Recommended	Notes
Processor	3rd Gen Intel Core i5-3470 Processor (6MB, 3.2GHz) w/HD2500 Graphics	CPU power is directly related to the performance of the application when running and rendering video. The better the CPU, the more responsive the application will be.
Memory	6GB, NON-ECC, 1600MHZ DDR3, 2DIMM	RAM is related to the number of different applications that can run simultaneously as well as the number of different operations that TruVision Navigator can perform at once. The higher the RAM, the better the performance of the application.
Hard Drive	500GB - 7200RPM, SATA 3.0Gb/s, 16MB Cache	Optional - TruVision Navigator requires approximately 700MB to install. To store exported video from the devices on the machine, an increased storage size may be required.
Graphics Card	Dual 1GB AMD Radeon™ HD 7470	Video Card capability is directly related to the video rendering performance within TruVision Navigator. The better the video card, the better the video rendering performance.
Resolution	1920 x 1080	
Network	Integrated PCIE 10/100/1000	The network interface card can be a performance bottleneck, depending upon the throughput of the card. If the card's throughput is less than the amount of data streaming to the machine, performance issues may occur.

### Supported Recording Devices

#### DVRs and HD-Hybrid Recorders

TruVision DVR 10  
TruVision DVR 11  
TruVision DVR 12  
TruVision DVR 12HD  
TruVision DVR 15HD  
TruVision DVR 41  
TruVision DVR 42  
TruVision DVR 44HD  
TruVision DVR 45HD  
TruVision DVR 60

#### Network Video Recorders

TruVision NVR 10  
TruVision NVR 20  
TruVision NVR 21  
TruVision NVR 21P  
TruVision NVR 21S  
TruVision NVR 22  
TruVision NVR 22P  
TruVision NVR 22S  
TruVision NVR 70



interlogix.com

Specifications subject to change without notice.

© 2017 United Technologies Corporation.  
All rights reserved.

All trademarks are the property of their respective owners.  
Interlogix is part of UTC Climate, Controls & Security,  
a unit of United Technologies Corporation.

Note: TruVision Navigator v7.1 SP1 is compatible with the following legacy recorders: DSR, DVMRE, DVSE, DVSR, NVR30, NVR31, NVR40, StoreSafe, SVR, SymDec. However, technical support is no longer provided.

2018/07 (GSP-2163)