

TruVision[®] Navigator

Unified Security Solution

OVERVIEW

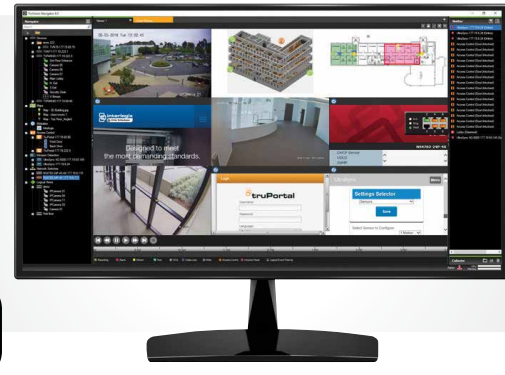
TruVision Navigator by Interlogix represents our latest advancement in integrated security solution software. The system delivers powerful software capabilities and allows users to integrate and manage their TruVision video, TruPortal™ access control, UltraSync® intrusion panels and IFS® network switches with a centralized, intuitive user-interface. TruVision Navigator can be used as a standalone application or can be deployed as a client/server architecture, making it scalable for deployment in either small- or large-scale commercial environments.

Using the intuitive TruVision Navigator user interface, administrators can remotely configure TruVision IP cameras, DVRs, HD-hybrid recorders and NVRs. TruVision Navigator also provides direct live/playback video viewing from TruVision IP cameras with SD memory cards. Key features include high performance video viewing with GPU, video tabs, custom views, maps, live event monitoring, camera sequencing, 360° camera de-warping, logical event filter, TruPortal, UltraSync, and IFS switch integration, browser support, a built-in device manager and network diagnostic tools.*

TruVision Navigator also offers backwards compatibility support for select TruVision recorders to aid in system upgrades. The software is able to provide efficient network bandwidth management and is ideal for LAN or WAN applications that incorporate multiple sites, such as schools, retail stores, bank branches, entertainment venues and geographically dispersed organizations.

With TruVision Navigator 8.0 Service Pack 2 (SP2), users can now create a video wall with select TruVision decoders.

For regulated industries, such as the cannabis industry, that require frequent remote archive storage, users can now schedule and perform recurring off-site video storage files.



STANDARD FEATURES

Intuitive Operator User Interface

- Logical view to customize the video device tree
- Up to 10 video tabs to create a customized video wall
- Custom views that allow user-specified groups of video streams and sequencing
- Place access control doors and intrusion sensors on maps and link to cameras for a fully integrated and centrally managed security solution
- Pop up the event monitor, with live video, when triggered by an alarm event
- Add video bookmarks and manage with bookmark manager
- Directly view live/playback video from TruVision IP cameras (with SD cards)
- Built-in TruVision 360° camera de-warping
- Optional USB keypad/joystick

Easy System Installation and Maintenance

- Discover TruVision video devices, TruPortal panels, UltraSync panels and IFS switches on the network
- Built-in Device Manager provides easy way to activate, set up and maintain TruVision devices on a network
- View camera names on IFS switch ports, view switch bandwidth usage and remotely cycle PoE on each port
- Remote device configuration and client software distribution
- Auto firmware update
- Remote focus/zoom control functions

System Administration Management

- Standalone and client/server architecture that supports server offline mode
- Defined groups and user permissions
- Audit trails and report exporting
- Built-in device diagnostics and reporting
- Automatically pause video streams not being viewed
- LDAP support to easily manage users

*Some features may require the purchase of a license.

Operator-Friendly User Interface

TruVision® Navigator brings together TruVision video, TruPortal™ access control, UltraSync® intrusion and IFS® network switches into one complete interface.

Device Tree

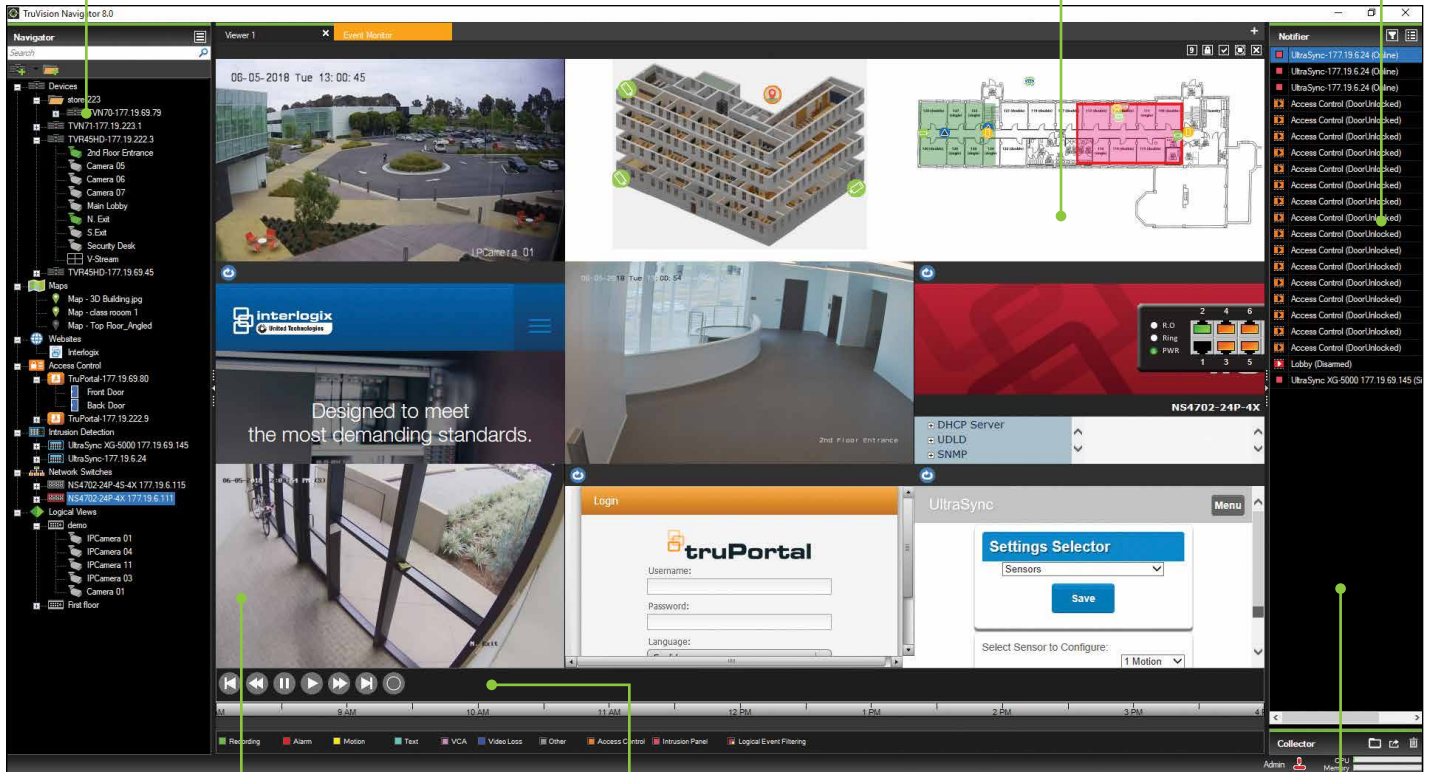
Provides quick access to TruVision video cameras and recorders, TruPortal access control, UltraSync intrusion and IFS network switches. Drag and drop devices from the tree to the video panes.

Facility/Campus Maps

Import facility/campus maps and place cameras, access control doors, and intrusion sensors on maps. Easily embed maps within maps.

Notifier

Provides real-time, color-coded video event notification of TruPortal and UltraSync alarm events.



Viewer

View live and recorded video with up to 10 detachable video viewing tabs allows you to create a virtual video wall. The pop-up event monitor window provides live video during an alarm. Users can easily set up individual video viewing tiles for sequencing of multiple cameras for easy monitoring.

Video Playback Controls

Easily play, pause, rewind and bookmark video recordings with controls and timeline.

Collector

Acts as a holding repository for video segments, snapshots and local recordings ready for export.

Built-in Device Manager

Device Discovery

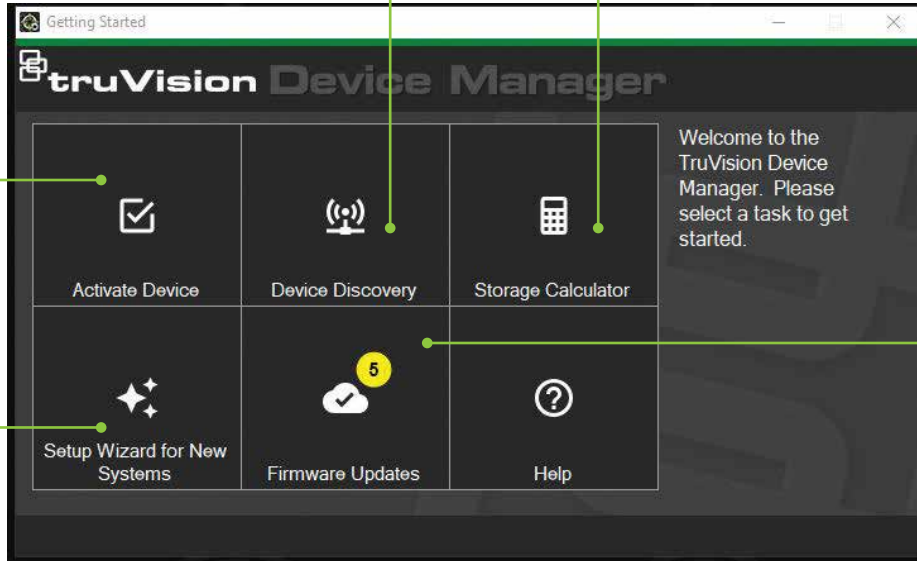
Device Manager searches for online devices within the network and displays network information for each device.

Storage Calculator

Launch the TruVision recorder storage calculator right within TruVision Navigator.

Activate Devices

Use this tool to discover and activate new TruVision® devices and assign a unique password for added security.



Firmware Update

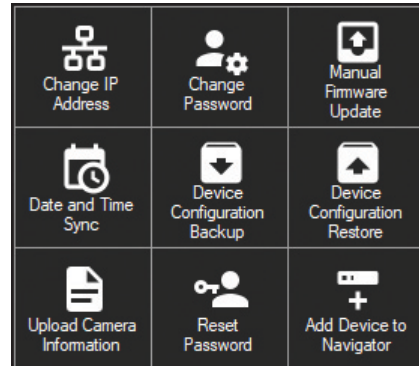
Use the Firmware Update window to automatically check if your devices are up-to-date. Upgrade the firmware of one device or multiple devices on a network.

New System Setup Wizard

Use the new System Setup Wizard to set up a first-time installed video system.

Device Manager Tools

Click on the Device Manager Tools button in the Device Manager window to access more useful tools.



Device Manager Capabilities

The following Device Manager features are compatible with the following Interlogix devices.

Device Type	Device Discovery	Change IP Address	Change Password	Firmware Upgrade	Change Date & Time	Device Config Backup & Restore	Upload IP Camera Information	Reset Password
Recorders	YES	YES	YES	YES	YES	YES	YES	YES
Cameras	YES	YES	YES	YES	YES	YES	N/A	YES
Encoders/Decoders	YES	YES	YES	YES	YES	YES	N/A	YES
IFS® Switches	YES	YES	NO	NO	YES	NO	N/A	NO
TruPortal™ Panels	YES	YES	NO	NO	YES	NO	N/A	NO
UltraSync® Panels	YES	NO	NO	NO	NO	NO	N/A	NO

TruVision® Navigator

Unified Security Solution

Software requirements

The following operating systems and other software components are prerequisites for client and server installation:
Note: 32-bit operating systems are not compatible with TruVision Navigator 8.0.

Standalone Client or Client/Server Software Requirements

Component	Version	Notes
Operating System	Microsoft® Windows 7 SP1 64-bit	
	Microsoft Windows 8.1 64-bit	WinPCAP needs to be installed separately and run in compatibility mode for operation on Windows 8 systems
	Microsoft Windows 10 64-bit	
	Microsoft Windows Server 2012 R2 64-bit	
	Microsoft Windows Server 2016	
Other	Microsoft .NET Framework 4.0	Packaged with the installation
	WinPCAP 4.1.3	Packaged with the installation
Database (For Server Only)	Microsoft's SQL 2008	Microsoft's SQL Express 2008 R2 is packaged with the installation.
	Microsoft's SQL 2008 R2	Microsoft SQL is not required for Standalone installation.

Server/client hardware guidelines

The following specifications are only meant to serve as a guideline as TruVision Navigator system performance varies according to the robustness of the machine.

Server hardware specifications

Component	Recommended	Notes
Processor	3rd Gen Intel Core i5-3470 Processor (6MB, 3.2GHz) w/HD2500 Graphics	CPU power is directly related to the performance of the application when running and rendering video. The better the CPU, the more responsive the application will be.
Memory	16GB RAM	RAM is related to the number of different applications that can run simultaneously as well as the number of different operations that TruVision Navigator can perform at once. The higher the RAM, the better the performance of the application.
Hard Drive	500GB - 7200RPM, SATA 3.0Gb/s, 16MB Cache	Optional - TruVision Navigator requires approximately 700MB to install. To store exported video from the devices on the machine, an increased storage size may be required.
Graphics Card	Nvidia® GeForce GTX 1060	Video Card capability is directly related to the video rendering performance within TruVision Navigator. The better the video card, the better the video rendering performance.
Resolution	1920 x 1080	
Network	Integrated PCIE 10/100/1000	The network interface card can be a performance bottleneck, depending upon the throughput of the card. If the card's throughput is less than the amount of data streaming to the machine, performance issues may occur.

Supported Recording Devices

DVRs and HD-Hybrid Recorders

TruVision DVR 10
TruVision DVR 11
TruVision DVR 12
TruVision DVR 12HD
TruVision DVR 15HD
TruVision DVR 41
TruVision DVR 42
TruVision DVR 44HD
TruVision DVR 45HD
TruVision DVR 60

Network Video Recorders

TruVision NVR 10
TruVision NVR 11
TruVision NVR 20
TruVision NVR 21
TruVision NVR 21P
TruVision NVR 21S
TruVision NVR 22
TruVision NVR 22P
TruVision NVR 22S
TruVision NVR 70
TruVision NVR 71



interlogix.com

Specifications subject to change without notice.

© 2019 United Technologies Corporation.
All rights reserved.

All trademarks are the property of their respective owners.
Interlogix is part of UTC Climate, Controls & Security,
a unit of United Technologies Corporation.

Note: The following recorders are no longer supported in TruVision Navigator v8.0 and above: DSR, DVMRE, DVSE, DVSR, NVR30, NVR31, NVR40, StoreSafe, SVR, SymDec. Customers may continue to use legacy TruVision recorders with Navigator v7.0, but technical support is no longer provided.

2019/07 (GSP-2816)